



ICC-ES Evaluation Report

Issued June 2022

ESR-3936

This report is subject to renewal June 2023.

DIVISION: 07 00 00—THERMAL AND MOISTURE PROTECTION

Section: 07 46 43—Composition Siding

REPORT HOLDER:

DASSO USA DBA EASOON USA, LLC

EVALUATION SUBJECT:

DASSOXTR CLASSIC ESPRESSO (ECOTIMBER XTERIOR IPE) AND DASSOXTR EPIC COGNAC (ECOTIMBER XTERIOR TEAK) SIDING

1.0 EVALUATION SCOPE

Compliance with the following codes:

- 2021, 2018, 2015 and 2012 *International Building Code* (IBC)
- 2021, 2018, 2015 and 2012 *International Residential Code* (IRC)

For evaluation for compliance with codes adopted by the Los Angeles Department of Building and Safety (LADBS), see [ESR-3936 LABC and LARC Supplement](#)

Properties evaluated:

- Durability
- Wind load resistance
- Surface-burning characteristics

2.0 USES

The dassoXTR Classic Espresso (EcoTimber Xterior Ipe) and dassoXTR Epic Cognac (EcoTimber Xterior Teak) sidings are used as exterior wall cladding in Type V-B construction (IBC) and nonfire-resistance-rated construction under the IRC.

3.0 DESCRIPTION

3.1 General:

The dassoXTR Classic Espresso (EcoTimber Xterior Ipe) and dassoXTR Epic Cognac (EcoTimber Xterior Teak) sidings are manufactured composite products consisting of bamboo filament, phenolic resin and other additives. The sidings are manufactured by a heat treatment and phenolic infusion process in accordance with the approved quality control manual. The sidings are available in 6 foot-length

(1829 mm) and nominal widths of 6 inches (152.4 mm) and 7 inches (177.8 mm) (actual dimensions of 5.39 inches and 6.34 inches or 137 mm or 161 mm) as shown in Figure 1. The sidings are available in a nominal thickness of $\frac{3}{4}$ inch (19 mm) (actual dimension of 0.71 inch or 18 mm). When tested in accordance with ASTM E84, dassoXTR Classic Espresso (EcoTimber Xterior Ipe) and dassoXTR Epic Cognac (EcoTimber Xterior Teak) sidings have a flame-spread index of 25.

When subjected to weathering, insect attack including Formosan termites and other decaying elements, dassoXTR Classic Espresso (EcoTimber Xterior Ipe) and dassoXTR Epic Cognac (EcoTimber Xterior Teak) sidings are equivalent in durability to preservative-treated or naturally durable lumber when used in locations described in Section 2.0 of this report. The sidings have been evaluated for use at ambient air temperatures between 20°F (-29°C) and 125°F (52°C).

4.0 INSTALLATION

4.1 General:

The dassoXTR Classic Espresso (EcoTimber Xterior Ipe) and dassoXTR Epic Cognac (EcoTimber Xterior Teak) sidings must be installed in accordance with the report holder's published installation instructions, the applicable code, and this report. The report holder's published installation instructions and this report must be strictly adhered to, and a copy of the instructions must be available at the jobsite at all times during installation. When the manufacturer's published installation instruction conflicts to this report, this report governs.

4.2 Wind Resistance:

The allowable transverse wind loads for the dassoXTR Classic Espresso (EcoTimber Xterior Ipe) and dassoXTR Epic Cognac (EcoTimber Xterior Teak) sidings, installed over the sheathing substrate of an underlying wall, are given in Table 1. The capacity of the sheathing substrate to resist the wind loads, must equal or exceed the design uniform transverse wind loads for the structure and substrate determined in accordance with Chapter 16 of the IBC or Section R301.2.1 of the IRC, as applicable.

4.3 Installation:

The dassoXTR Classic Espresso (EcoTimber Xterior Ipe) and dassoXTR Epic Cognac (EcoTimber Xterior Teak) sidings must be installed over a sheathing substrate capable

of withstanding the imposed positive and negative design wind loads. The sheathing substrate must be fastened to the wall framing in accordance with the applicable code, taking into account the transverse wind loads it will be subjected to in use. The substrate must be covered with an approved water-resistive barrier where required by code.

The dassoXTR Classic Espresso (EcoTimber Xterior Ipe) and dassoXTR Epic Cognac (EcoTimber Xterior Teak) sidings are attached to the sheathing substrate with the Eisen $\frac{3}{4}$ " Air-Gap Sheathing Clip and Eisen $\frac{1}{4}$ " Air-Gap Batten Clip with No. 10 stainless steel pan head screws that are spaced maximum 16 inches (406 mm) on center. Fasteners must be of sufficient length to penetrate the framing a minimum of $1\frac{5}{8}$ inches (41.3 mm). When installed vertically, the sidings must be attached with the Eisen $\frac{3}{4}$ " Air-Gap Sheathing Clip and Eisen $\frac{1}{4}$ " Air-Gap Batten Clip systems to blocking members spaced maximum 16 inches (406 mm) on center. See Figure 2 for a typical installation illustration.

5.0 CONDITION OF USE

The dassoXTR Classic Espresso (EcoTimber Xterior Ipe) and dassoXTR Epic Cognac (EcoTimber Xterior Teak) sidings described in this report comply with, or are suitable alternatives to what is specified in, those codes listed in Section 1.0 of this report, subject to the following conditions:

- 5.1 Installation must comply with this report, the manufacturer's published installation instructions, and applicable code. If there is a conflict between the manufacturer's published installation instructions and this report, this report governs.
- 5.2 All windows, doors and other exterior openings must be flashed in accordance with the applicable code. Horizontal joints between siding must be flashed and sealed in accordance with the manufacturer's instructions.
- 5.3 Openings in, penetrations through, and terminations of the sidings are outside the scope of this report and must be specifically approved by the code official in accordance with the applicable code.
- 5.4 The sidings must be installed in accordance with Section 4.3 over a code-approved water-resistive

barrier that is installed in accordance with the applicable code.

- 5.5 The sidings must be installed only on exterior walls covered by wood structural panel sheathing capable of supporting imposed loads including but not limited to positive and negative transverse wind loads.
- 5.6 The sidings must be installed on exterior walls braced in accordance with the applicable code.
- 5.7 The dassoXTR Classic Espresso (EcoTimber Xterior Ipe) and dassoXTR Epic Cognac (EcoTimber Xterior Teak) sidings are produced in Jiangxi, China, under a quality control program with inspections by ICC-ES.

6.0 EVIDENCE SUBMITTED

- 6.1 Reports of testing in accordance with ASTM E84.
- 6.2 Report of testing in accordance with ASTM C1185.
- 6.3 Reports of testing in accordance with ASTM E330.
- 6.4 Reports of testing for durability in accordance with ASTM D7032.
- 6.5 Report of testing in accordance with Sections 3.2.1, 3.2.2, 3.3, 3.5.2, 3.6 and 3.7 of the ICC-ES Acceptance Criteria AC321 for Treated Engineered Wood Siding dated April 2019 (editorially revised April 2021).

7.0 IDENTIFICATION

- 7.1 The dassoXTR Classic Espresso (EcoTimber Xterior Ipe) and dassoXTR Epic Cognac (EcoTimber Xterior Teak) sidings must be labeled with the product name and Dasso USA dba Easonon USA, LLC name and address and the evaluation report number (ESR-3936).
- 7.2 The report holder's contact information is the following:

DASSO USA DBA EASOON USA, LLC
6060 BOAT ROCK BOULEVARD SW SUITE 800
ATLANTA, GEORGIA 30336
(404) 691-6872
www.dassousa.com
www.dassoXTR.com

TABLE 1—MAXIMUM FASTENER SPACING AND ALLOWABLE TRANSVERSE LOADS

PRODUCT NAME	MAXIMUM FASTENERS/SUPPORT/SPAN SPACING ² (inches)	ALLOWABLE TRANSVERSE LOAD (psf) ¹
		Positive/Negative
dassoXTR Classic Espresso (EcoTimber Xterior Ipe)	16	69
dassoXTR Epic Cognac (EcoTimber Xterior Teak)	16	67

For SI: 1 inch = 25.4, 1 psf = 47.09 N/m²

¹Maximum allowable transverse wind load capacity determined in accordance with ASTM E330.

²Fasteners must be of sufficient length to penetrate the wall framing a minimum 1⁵/₈ inches (41.3 mm).

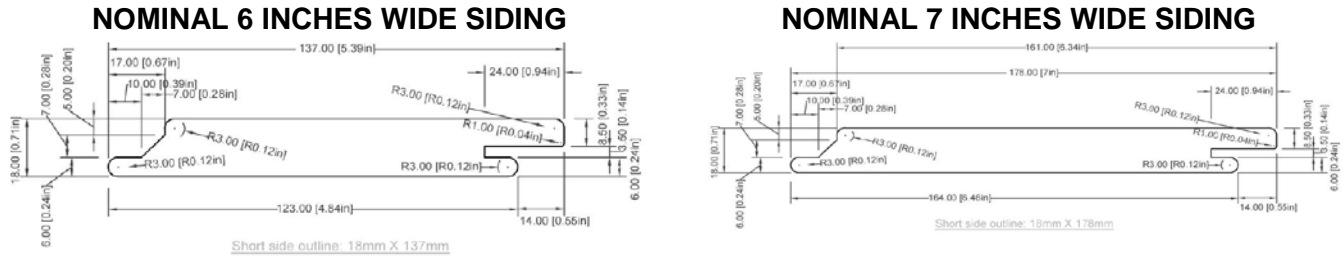


FIGURE 1— DASSOXTR CLASSIC ESPRESSO (ECOTIMBER XTERIOR IPE) AND DASSOXTR EPIC COGNAC (ECOTIMBER XTERIOR TEAK) SIDINGS

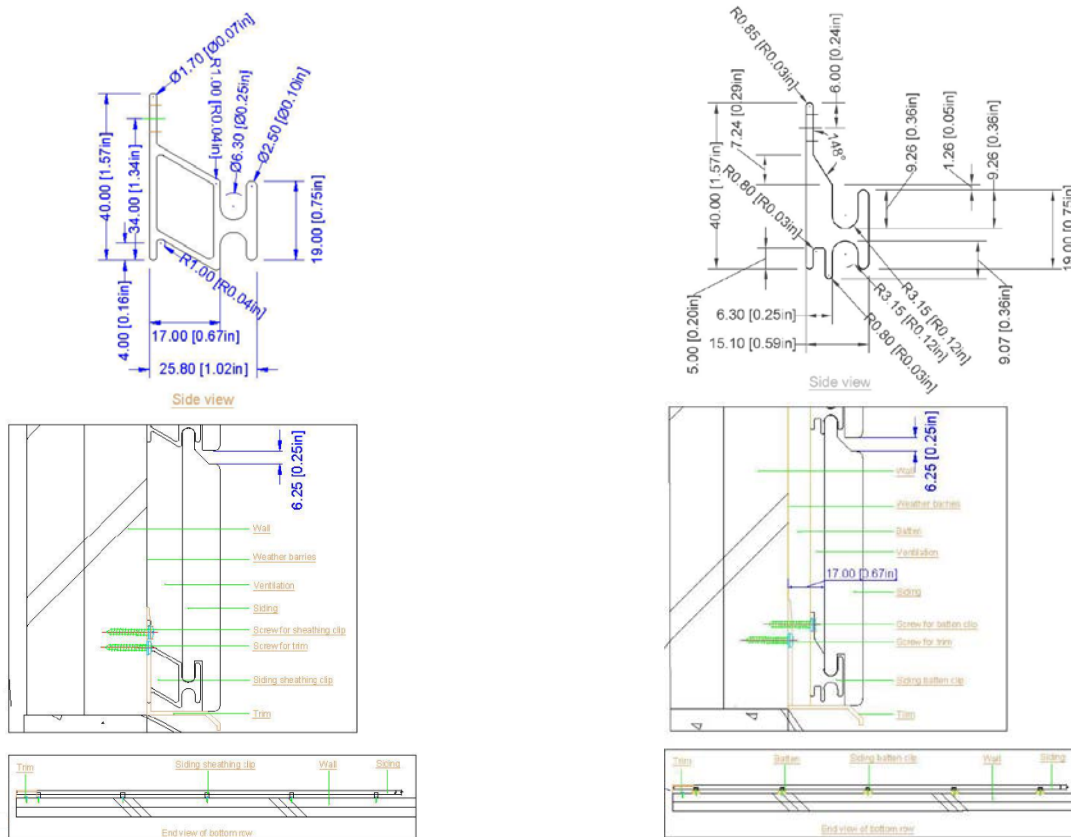


FIGURE 2— EISEN 3/4" AIR-GAP SHEATHING CLIP AND EISEN 1/4" AIR-GAP BATTEN CLIP AND SIDING INSTALLATION USING SCREWS

DIVISION: 07 00 00—THERMAL AND MOISTURE PROTECTION
Section: 07 46 43—Composition Siding

REPORT HOLDER:

DASSO USA DBA EASOON USA, LLC

EVALUATION SUBJECT:

DASSOXTR CLASSIC ESPRESSO (ECOTIMBER XTERIOR IPE) AND DASSOXTR EPIC COGNAC (ECOTIMBER XTERIOR TEAK) SIDING

1.0 REPORT PURPOSE AND SCOPE**Purpose:**

The purpose of this evaluation report supplement is to indicate that the dassoXTR Classic Espresso (EcoTimber Xterior Ipe) and dassoXTR Epic Cognac (EcoTimber Xterior Teak) sidings, described in ICC-ES evaluation report [ESR-3936](#), have also been evaluated for compliance with the codes noted below as adopted by the Los Angeles Department of Building and Safety (LADBS).

Applicable code editions:

- 2020 *City of Los Angeles Building Code* (LABC)
- 2020 *City of Los Angeles Residential Code* (LARC)

2.0 CONCLUSIONS

The dassoXTR Classic Espresso (EcoTimber Xterior Ipe) and dassoXTR Epic Cognac (EcoTimber Xterior Teak) sidings, described in Sections 2.0 through 7.0 of the evaluation report [ESR-3936](#), comply with the LABC Chapter 14, and the LARC, and are subject to the conditions of use described in this supplement.

3.0 CONDITIONS OF USE

The dassoXTR Classic Espresso (EcoTimber Xterior Ipe) and dassoXTR Epic Cognac (EcoTimber Xterior Teak) sidings described in this evaluation report supplement must comply with all of the following conditions:

- All applicable sections in the evaluation report [ESR-3936](#).
- The design, installation, conditions of use and identification are in accordance with the 2018 *International Building Code*® (IBC) and 2018 *International Residential Code* (IRC) provisions noted in the evaluation report [ESR-3936](#).
- The design, installation and inspection are in accordance with additional requirements of LABC Chapters 16 and 17, as applicable.
- Sidings must be used only in locations where combustible materials are permitted in the 2020 LABC.
- Under the LARC, an engineered design in accordance with LARC Section R301.1.3 must be submitted.
- The dassoXTR Classic Espresso (EcoTimber Xterior Ipe) and dassoXTR Epic Cognac (EcoTimber Xterior Teak) sidings have not been evaluated under the LABC Chapter 7A or the LARC Section R337 for use in the exterior design and construction of new buildings located in any Fire Hazard Severity Zone within State Responsibility Areas of any Wildland – Urban Interface Area.

This supplement expires concurrently with the evaluation report, issued June 2022.